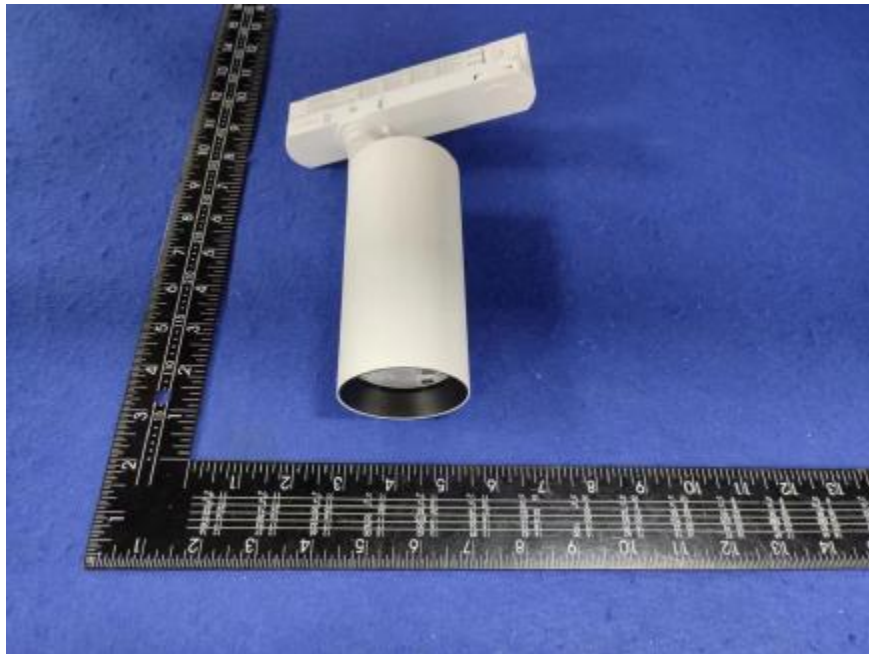


Luminaire Photograph



Light Output Ratio:	93.5%	
Luminaire Power:	28.15 W	
SHR Nominal:	0.50	Calculated using the TM5
SHR Maximum:	0.65	fine grid method.

C Range: 0 - 360DEG
C Interval: 30.0DEG
Test Speed: HIGH
Temperature: 25.3 °C
Operators: zoe
Test Date: 2023-10-5

Range: 0 - 180DEG
Interval: 1.0DEG
Test System: EVERFINE GO-SPEX500_V1 SYSTEM V2.00.461
Humidity: 65.0%
Test Distance: 3.160m [K=1.0000]
Remarks: LAMP: BXRE-30G1000-A-83 Ra: 90
LENS: PM-0132B-007-056 36R
DRIVER: ECXe 1050.646 700mA
30minutes warm-up

LUMINOUS INTENSITY DISTRIBUTION DIAGRAM

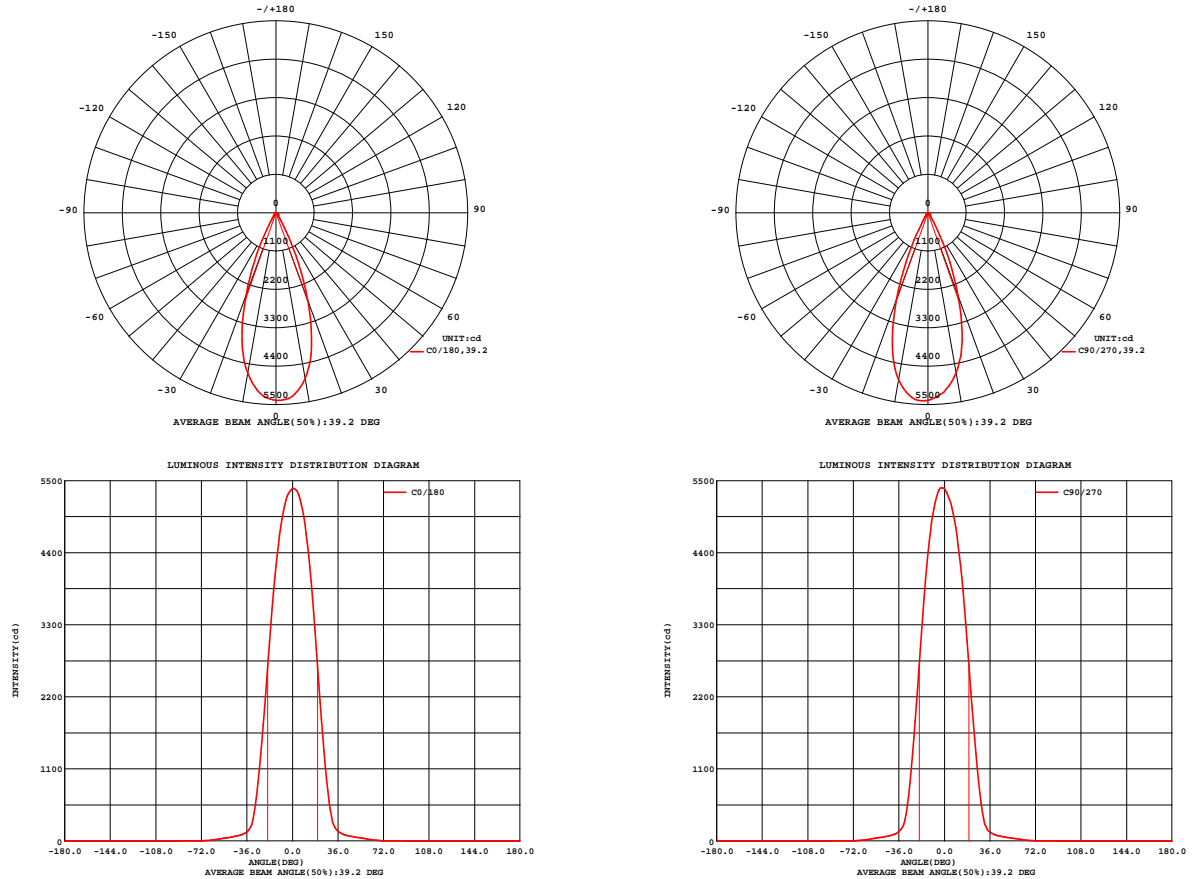


Fig. C0/C180

Fig. C90/C270

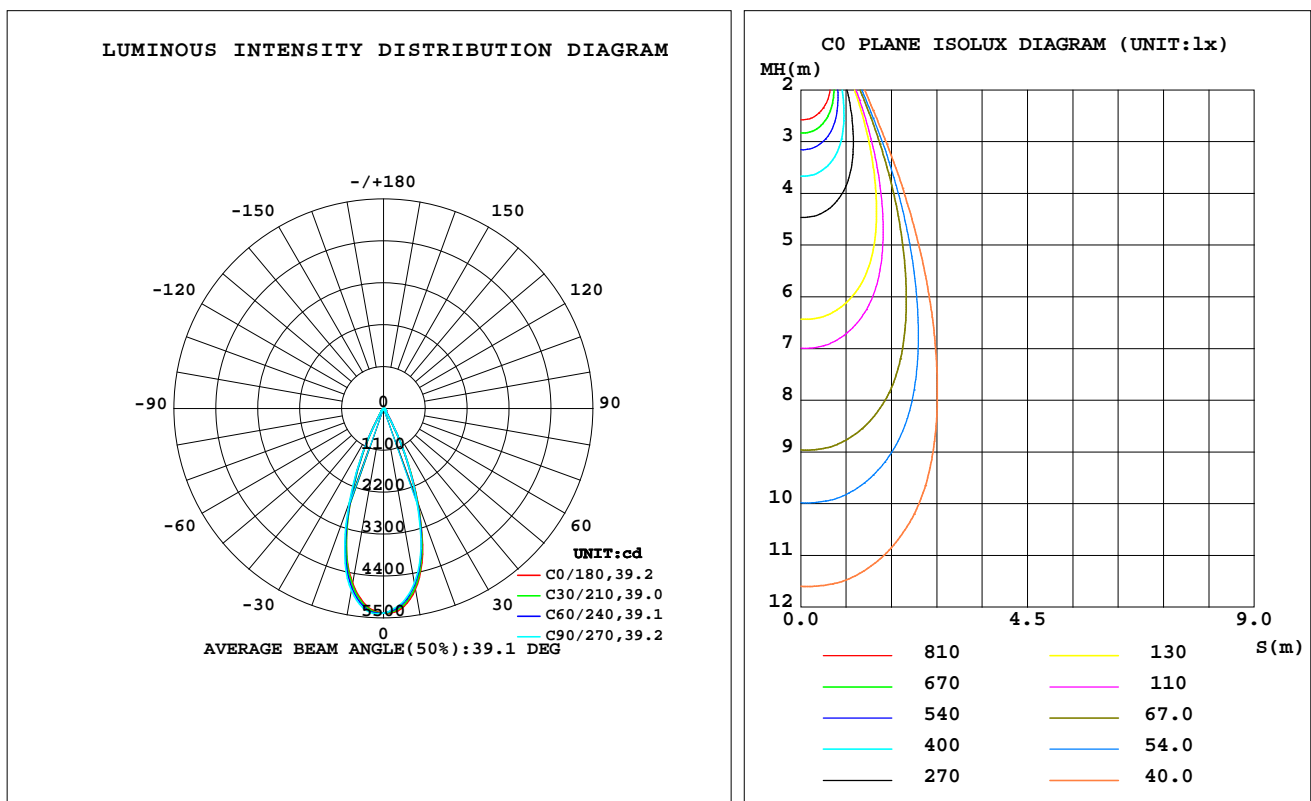
C Range: 0 - 360DEG
C Interval: 30.0DEG
Test Speed: HIGH
Temperature: 25.3 °C
Operators: zoe
Test Date: 2023-10-5

Range: 0 - 180DEG
Interval: 1.0DEG
Test System: EVERFINE GO-SPEX500_V1 SYSTEM V2.00.461
Humidity: 65.0%
Test Distance: 3.160m [K=1.0000]
Remarks: LAMP: BXRE-30G1000-A-83 Ra: 90
LENS: PM-0132B-007-056 36R
DRIVER: ECXe 1050.646 700mA
30minutes warm-up

LUMINAIRE PHOTOMETRIC TEST REPORT

Test:U:220.07V I:0.1327A P:28.155W PF:0.9611 Freq:49.99Hz Lamp Flux:2523.8x1 lm		
NAME: 2319.200-UA-700	TYPE:	WEIGHT:
SPEC.: 3000K	DIM.:	SERIAL No.: 2310051124
MFR.: RISE	SUR.: 0.002826m2	Shielding Angle:

DATA OF LAMP		PHOTOMETRIC DATA Eff: 83.83 lm/W			
MODEL	Bridgelux	I _{max} (cd)	5399	S/MH(C0/180)	0.61
NOMINAL POWER(W)	28	LOR(%)	93.5	S/MH(C90/270)	0.61
RATED VOLTAGE(V)	220	TOTAL FLUX(lm)	2360.3	UP,DN(C0-180)	0.0,46.4
NOMINAL FLUX(lm)	2523.8	CIE CLASS	DIRECT	UP,DN(C180-360)	0.0,47.1
LAMPS INSIDE	1	up(%)	0.0	CIBSE SHR NOM	0.50
TEST VOLTAGE(V)	220	down(%)	93.5	CIBSE SHR MAX	0.65



C Range: 0 - 360DEG
C Interval: 30.0DEG
Test Speed: HIGH
Temperature:25.3℃
Operators:zoe
Test Date:2023-10-5

Range: 0 - 180DEG
Interval: 1.0DEG
Test System:EVERFINE GO-SPEX500_V1 SYSTEM V2.00.461
Humidity:65.0%
Test Distance:3.160m [K=1.0000]
Remarks: LAMP:BXRE-30G1000-A-83 Ra:90
LENS:PM-0132B-007-056 36R
DRIVER: ECXe 1050.646 700mA
30minutes warm-up

ZONAL FLUX DIAGRAM

ZONAL FLUX DIAGRAM:

	C0	C45	C90	C135	C180	C225	C270	C315		zone	total	%lum,lamp
10	4826	4740	4657	4605	4667	4750	4857	4888	0- 10	484.2	484.2	20.5,19.2
20	2655	2596	2539	2457	2517	2524	2632	2688	10- 20	1041	1525	64.6,60.4
30	466.5	455.2	444.8	415.5	431.5	409.2	418.3	462.3	20- 30	610.0	2135	90.5,84.6
40	104.5	99.86	95.40	93.20	95.18	94.67	97.83	105.1	30- 40	117.3	2253	95.4,89.3
50	58.33	55.89	53.65	53.29	53.69	54.05	55.56	58.52	40- 50	56.67	2309	97.8,91.5
60	27.00	26.22	24.47	22.71	22.49	22.57	24.11	26.61	50- 60	36.62	2346	99.4,93
70	5.537	5.749	5.205	4.576	4.359	4.497	4.712	5.400	60- 70	12.93	2359	99.9,93.5
80	0.1011	0.0803	0.0915	0.0768	0.0833	0.0640	0.0760	0.0625	70- 80	1.408	2360	100,93.5
90	0	0	0	0	0	0	0	0	80- 90	0.0582	2360	100,93.5
100	0	0	0	0	0	0	0	0	90-100	0	2360	100,93.5
110	0	0	0	0	0	0	0	0	100-110	0	2360	100,93.5
120	0	0	0	0	0	0	0	0	110-120	0	2360	100,93.5
130	0	0	0	0	0	0	0	0	120-130	0	2360	100,93.5
140	0	0	0	0	0	0	0	0	130-140	0	2360	100,93.5
150	0	0	0	0	0	0	0	0	140-150	0	2360	100,93.5
160	0	0	0	0	0	0	0	0	150-160	0	2360	100,93.5
170	0	0	0	0	0	0	0	0	160-170	0	2360	100,93.5
180	0	0	0	0	0	0	0	0	170-180	0	2360	100,93.5
DEG	LUMINOUS INTENSITY:cd									UNIT:lm		

C Range: 0 - 360DEG
 C Interval: 30.0DEG
 Test Speed: HIGH
 Temperature:25.3℃
 Operators:zoe
 Test Date:2023-10-5

Range: 0 - 180DEG
 Interval: 1.0DEG
 Test System:EVERFINE GO-SPEX500_V1 SYSTEM V2.00.461
 Humidity:65.0%
 Test Distance:3.160m [K=1.0000]
 Remarks: LAMP:BXRE-30G1000-A-83 Ra:90
 LENS:PM-0132B-007-056 36R
 DRIVER: ECXe 1050.646 700mA
 30minutes warm-up

LUMINANCE LIMITATION CURVES

Test:U:220.07V I:0.1327A P:28.155W PF:0.9611 Freq:49.99Hz
Lamp Flux:2523.8x1 lm

NAME: 2319.200-UA-700

TYPE:

WEIGHT:

SPEC.: 3000K

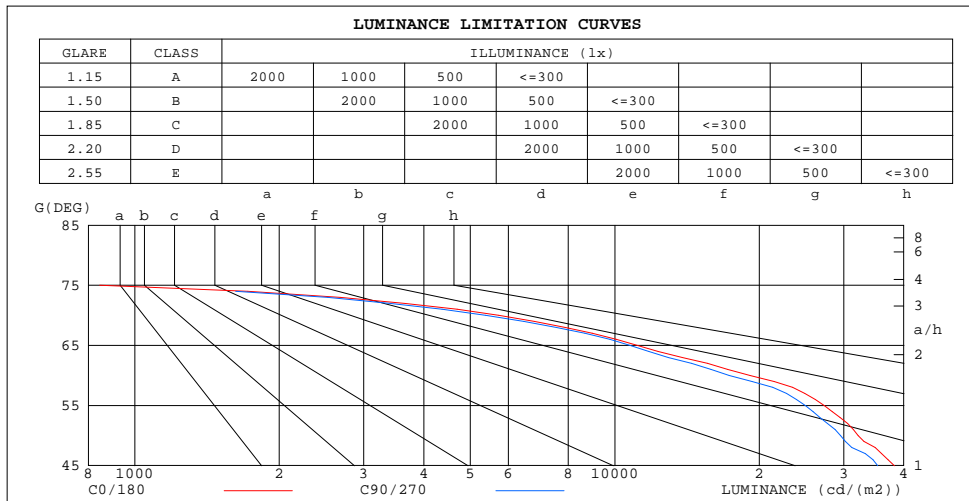
DIM.:

SERIAL No.: 2310051124

MFR.: RISE

SUR.: 0.002826m2

Shielding Angle:



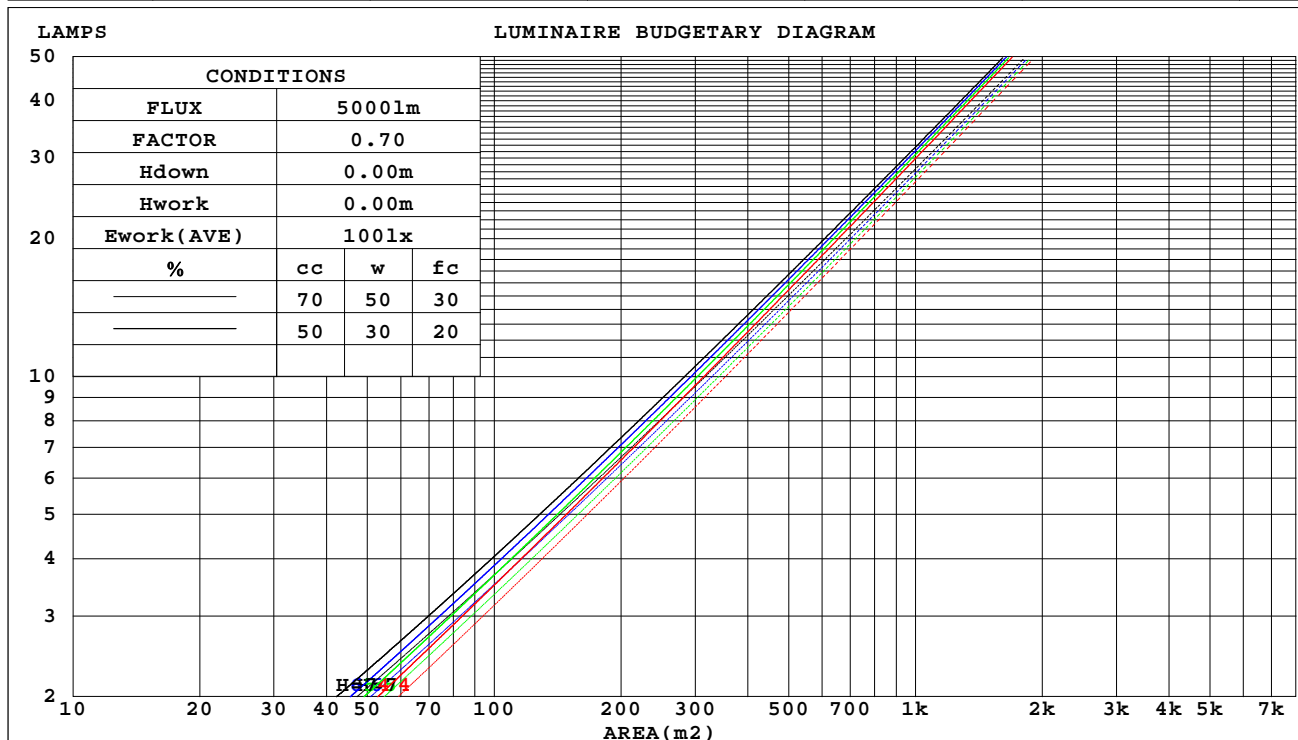
C Range: 0 - 360DEG
C Interval: 30.0DEG
Test Speed: HIGH
Temperature:25.3℃
Operators:zoe
Test Date:2023-10-5

Range: 0 - 180DEG
Interval: 1.0DEG
Test System:EVERFINE GO-SPEX500_V1 SYSTEM V2.00.461
Humidity:65.0%
Test Distance:3.160m [K=1.0000]
Remarks: LAMP:BXRE-30G1000-A-83 Ra:90
LENS:PM-0132B-007-056 36R
DRIVER: ECXe 1050.646 700mA
30minutes warm-up

CU AND LUMINAIRE BUDGETARY ESTIMATE DIAGRAM

Test:U:220.07V I:0.1327A P:28.155W PF:0.9611 Freq:49.99Hz Lamp Flux:2523.8x1 lm		
NAME: 2319.200-UA-700	TYPE:	WEIGHT:
SPEC.: 3000K	DIM.:	SERIAL No.: 2310051124
MFR.: RISE	SUR.: 0.002826m2	Shielding Angle:

cc	80%			70%			50%			30%			10%			0
w	50%	30%	10%	50%	30%	10%	50%	30%	10%	50%	30%	10%	50%	30%	10%	0
fc	20%			20%			20%			20%			20%			0
RCR	RCR:Room Cavity Ratio															



C Range: 0 - 360DEG
C Interval: 30.0DEG
Test Speed: HIGH
Temperature:25.3℃
Operators:zoe
Test Date:2023-10-5

Range: 0 - 180DEG
Interval: 1.0DEG
Test System:EVERFINE GO-SPEX500_V1 SYSTEM V2.00.461
Humidity:65.0%
Test Distance:3.160m [K=1.0000]
Remarks: LAMP:BXRE-30G1000-A-83 Ra:90
LENS:PM-0132B-007-056 36R
DRIVER: ECXe 1050.646 700mA
30minutes warm-up

WEC AND CCEC

Test:U:220.07V I:0.1327A P:28.155W PF:0.9611 Freq:49.99Hz Lamp Flux:2523.8x1 lm		
NAME: 2319.200-UA-700	TYPE:	WEIGHT:
SPEC.: 3000K	DIM.:	SERIAL No.: 2310051124
MFR.: RISE	SUR.: 0.002826m2	Shielding Angle:

cc	80%			70%			50%			30%			10%			0	
w	50%	30%	10%	50%	30%	10%	50%	30%	10%	50%	30%	10%	50%	30%	10%	0	
fc	20%			20%			20%			20%			20%			0	
RCR	RCR:Room Cavity Ratio						Wall Exitance Coefficients(WEC)										
0.0																	
1.0	.145	.082	.026	.139	.079	.025	.127	.073	.023	.116	.067	.022	.106	.062	.020		
2.0	.136	.075	.023	.131	.072	.022	.121	.068	.021	.113	.063	.020	.104	.059	.019		
3.0	.128	.068	.020	.124	.066	.020	.116	.063	.019	.108	.059	.018	.101	.056	.017		
4.0	.121	.063	.019	.118	.062	.018	.111	.059	.018	.104	.056	.017	.098	.053	.016		
5.0	.115	.059	.017	.112	.057	.017	.106	.055	.016	.100	.053	.016	.095	.051	.015		
6.0	.109	.055	.016	.107	.054	.015	.101	.052	.015	.096	.050	.015	.092	.048	.014		
7.0	.104	.052	.015	.102	.051	.014	.097	.049	.014	.093	.048	.014	.089	.046	.014		
8.0	.100	.049	.014	.097	.048	.014	.093	.047	.013	.090	.045	.013	.086	.044	.013		
9.0	.095	.046	.013	.093	.046	.013	.090	.044	.013	.086	.043	.012	.083	.042	.012		
10.0	.092	.044	.012	.090	.043	.012	.087	.042	.012	.084	.041	.012	.081	.041	.012		

cc	80%			70%			50%			30%			10%			0
w	50%	30%	10%	50%	30%	10%	50%	30%	10%	50%	30%	10%	50%	30%	10%	0
fc	20%			20%			20%			20%			20%			0
RCR	RCR:Room Cavity Ratio			Ceiling Cavity Exitance Coefficients(CCEC)												
0.0	.178	.178	.178	.152	.152	.152	.104	.104	.104	.060	.060	.060	.019	.019	.019	
1.0	.159	.147	.137	.136	.126	.118	.093	.087	.082	.053	.050	.047	.017	.016	.015	
2.0	.143	.124	.108	.122	.107	.094	.084	.074	.065	.048	.043	.038	.016	.014	.012	
3.0	.130	.106	.087	.111	.091	.075	.076	.064	.053	.044	.037	.031	.014	.012	.010	
4.0	.119	.092	.071	.102	.079	.062	.070	.055	.044	.041	.032	.026	.013	.011	.008	
5.0	.110	.081	.059	.095	.070	.051	.065	.049	.036	.038	.029	.022	.012	.009	.007	
6.0	.102	.072	.050	.088	.062	.043	.061	.043	.031	.035	.026	.018	.011	.008	.006	
7.0	.096	.064	.042	.082	.056	.037	.057	.039	.026	.033	.023	.016	.011	.008	.005	
8.0	.090	.058	.036	.078	.050	.032	.054	.035	.022	.031	.021	.013	.010	.007	.004	
9.0	.085	.053	.032	.073	.046	.027	.051	.032	.020	.030	.019	.012	.010	.006	.004	
10.0	.081	.049	.028	.070	.042	.024	.048	.030	.017	.028	.018	.010	.009	.006	.003	

C Range: 0 - 360DEG
C Interval: 30.0DEG
Test Speed: HIGH
Temperature:25.3℃
Operators:zoe
Test Date:2023-10-5

Range: 0 - 180DEG
Interval: 1.0DEG
Test System:EVERFINE GO-SPEX500_V1 SYSTEM V2.00.461
Humidity:65.0%
Test Distance:3.160m [K=1.0000]
Remarks: LAMP:BXRE-30G1000-A-83 Ra:90
LENS:PM-0132B-007-056 36R
DRIVER: ECXe 1050.646 700mA
30minutes warm-up

UGR(Unified Glare Rating) Table

Test:U:220.07V I:0.1327A P:28.155W PF:0.9611 Freq:49.99Hz Lamp Flux:2523.8x1 lm										
NAME: 2319.200-UA-700					TYPE:			WEIGHT:		
SPEC.: 3000K					DIM.:			SERIAL No.: 2310051124		
MFR.: RISE					SUR.: 0.002826m2			Shielding Angle:		
ceiling/cavity	0.7	0.7	0.5	0.5	0.3	0.7	0.7	0.5	0.5	0.3
walls	0.5	0.3	0.5	0.3	0.3	0.5	0.3	0.5	0.3	0.3
working plane	0.2	0.2	0.2	0.2	0.2	0.2	0.2	0.2	0.2	0.2
Room dimensions	Viewed crosswise					Viewed endwise				
x = 2H y = 2H	14.0	14.8	14.2	15.0	15.1	13.6	14.4	13.9	14.6	14.7
3H	14.1	14.8	14.3	15.0	15.2	13.7	14.4	13.9	14.6	14.8
4H	14.0	14.7	14.2	14.9	15.1	13.6	14.3	13.9	14.5	14.7
6H	13.9	14.5	14.2	14.8	15.0	13.5	14.2	13.8	14.4	14.6
8H	13.8	14.5	14.1	14.7	15.0	13.5	14.1	13.8	14.4	14.6
12H	13.8	14.4	14.1	14.7	14.9	13.4	14.0	13.8	14.3	14.6
4H 2H	14.1	14.7	14.3	15.0	15.2	13.7	14.4	14.0	14.6	14.8
3H	14.1	14.7	14.4	15.0	15.2	13.8	14.4	14.1	14.6	14.9
4H	14.0	14.6	14.4	14.9	15.2	13.7	14.2	14.0	14.5	14.8
6H	13.9	14.4	14.3	14.7	15.1	13.6	14.1	14.0	14.4	14.7
8H	13.9	14.3	14.3	14.7	15.0	13.5	14.0	13.9	14.3	14.7
12H	13.8	14.2	14.2	14.6	15.0	13.5	13.9	13.9	14.3	14.7
8H 4H	13.9	14.3	14.3	14.7	15.0	13.6	14.0	13.9	14.3	14.7
6H	13.8	14.1	14.2	14.5	14.9	13.4	13.8	13.9	14.2	14.6
8H	13.7	14.0	14.2	14.5	14.9	13.4	13.7	13.8	14.1	14.6
12H	13.7	13.9	14.1	14.4	14.8	13.3	13.6	13.8	14.0	14.5
12H 4H	13.8	14.2	14.2	14.6	15.0	13.5	13.9	13.9	14.3	14.7
6H	13.7	14.0	14.2	14.5	14.9	13.4	13.7	13.8	14.1	14.6
8H	13.7	13.9	14.1	14.4	14.8	13.3	13.6	13.8	14.0	14.5
Variations with the observer position at spacings(CIE Pub.117):										
S = 1.0H	+ 1.1 / - 1.6					+ 1.0 / - 1.6				
1.5H	+ 1.4 / - 1.0					+ 1.1 / - 0.7				
2.0H	+ 1.8 / - 3.3					+ 1.8 / - 3.2				

CIE Pub.117, 2524 lm Total Lamp Luminous Flux Correct (8log(F/F0) = 3.2)
Area: 0.002826 m2

C Range: 0 - 360DEG
C Interval: 30.0DEG
Test Speed: HIGH
Temperature:25.3℃
Operators:zoe
Test Date:2023-10-5

Range: 0 - 180DEG
Interval: 1.0DEG
Test System:EVERFINE GO-SPEX500_V1 SYSTEM V2.00.461
Humidity:65.0%
Test Distance:3.160m [K=1.0000]
Remarks: LAMP:BXRE-30G1000-A-83 Ra:90
LENS:PM-0132B-007-056 36R
DRIVER: ECXe 1050.646 700mA
30minutes warm-up

UTILIZATION FACTORS TABLE

Test:U:220.07V I:0.1327A P:28.155W PF:0.9611 Freq:49.99Hz Lamp Flux:2523.8x1 lm		
NAME: 2319.200-UA-700	TYPE:	WEIGHT:
SPEC.: 3000K	DIM.:	SERIAL No.: 2310051124
MFR.: RISE	SUR.: 0.002826m2	Shielding Angle:

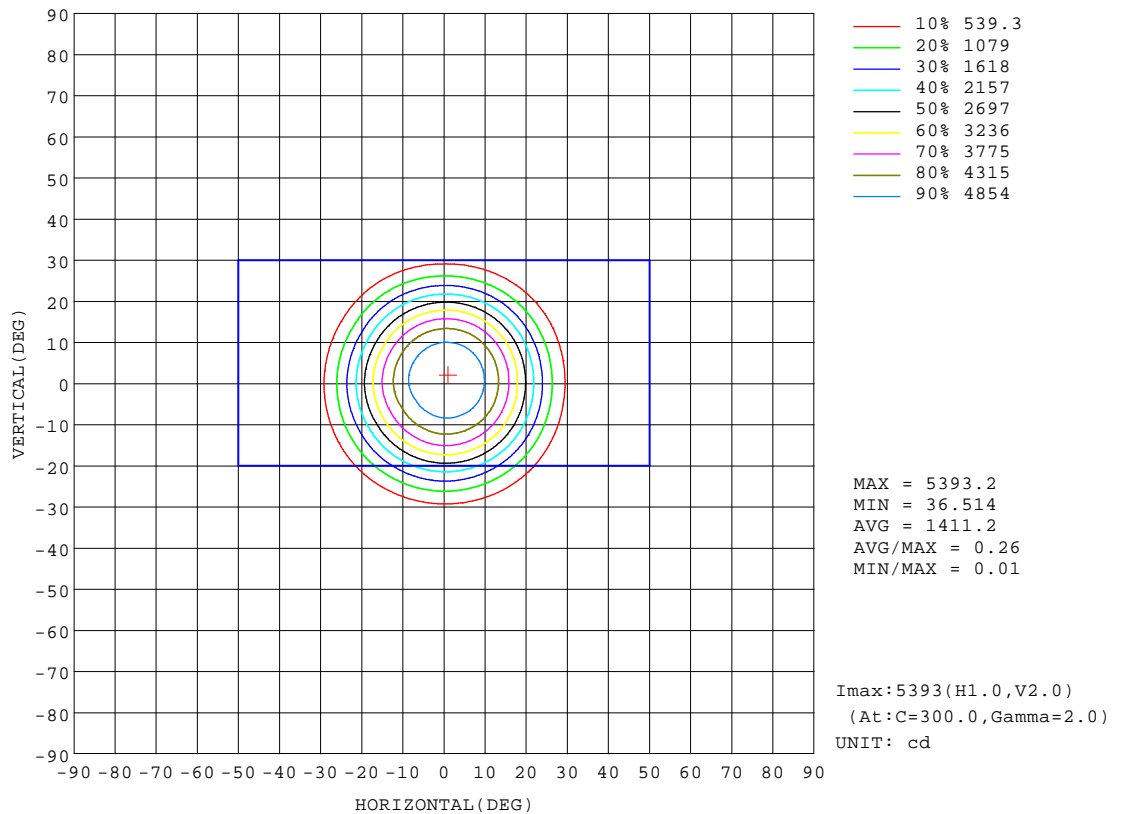
REFLECTANCE										
Ceiling	0.8	0.8	0.8	0.7	0.7	0.7	0.5	0.5	0.5	0
Walls	0.7	0.5	0.3	0.7	0.5	0.3	0.7	0.5	0.3	0
Working plane	0.2	0.2	0.2	0.2	0.2	0.2	0.2	0.2	0.2	0
ROOM INDEX	UTILIZATION FACTORS(PERCENT) $k(RI) \times RCR = 5$									
k = 0.60	83	77	74	82	77	74	82	77	74	70
0.80	90	84	81	89	84	81	88	84	81	77
1.00	94	89	85	93	88	85	91	88	85	81
1.25	97	93	89	96	92	89	94	91	88	85
1.50	100	95	92	99	95	92	96	93	91	87
2.00	102	98	95	101	97	95	98	95	93	88
2.50	103	100	97	102	99	97	99	97	95	89
3.00	105	102	99	103	100	98	100	98	96	90
4.00	107	104	102	105	103	101	101	100	98	92
5.00	108	106	104	106	104	103	102	101	100	93
ROOM INDEX	UF(total)									Direct
According to DIN EN 13032-2 2004			Suspended					SHRNOM = 1.25		

C Range: 0 - 360DEG
C Interval: 30.0DEG
Test Speed: HIGH
Temperature:25.3℃
Operators:zoe
Test Date:2023-10-5

Range: 0 - 180DEG
Interval: 1.0DEG
Test System:EVERFINE GO-SPEX500_V1 SYSTEM V2.00.461
Humidity:65.0%
Test Distance:3.160m [K=1.0000]
Remarks: LAMP:BXRE-30G1000-A-83 Ra:90
LENS:PM-0132B-007-056 36R
DRIVER: ECXe 1050.646 700mA
30minutes warm-up

ISOCANDELA DIAGRAM

Test:U:220.07V I:0.1327A P:28.155W PF:0.9611 Freq:49.99Hz Lamp Flux:2523.8x1 lm		
NAME: 2319.200-UA-700	TYPE:	WEIGHT:
SPEC.: 3000K	DIM.:	SERIAL No.: 2310051124
MFR.: RISE	SUR.: 0.002826m2	Shielding Angle:

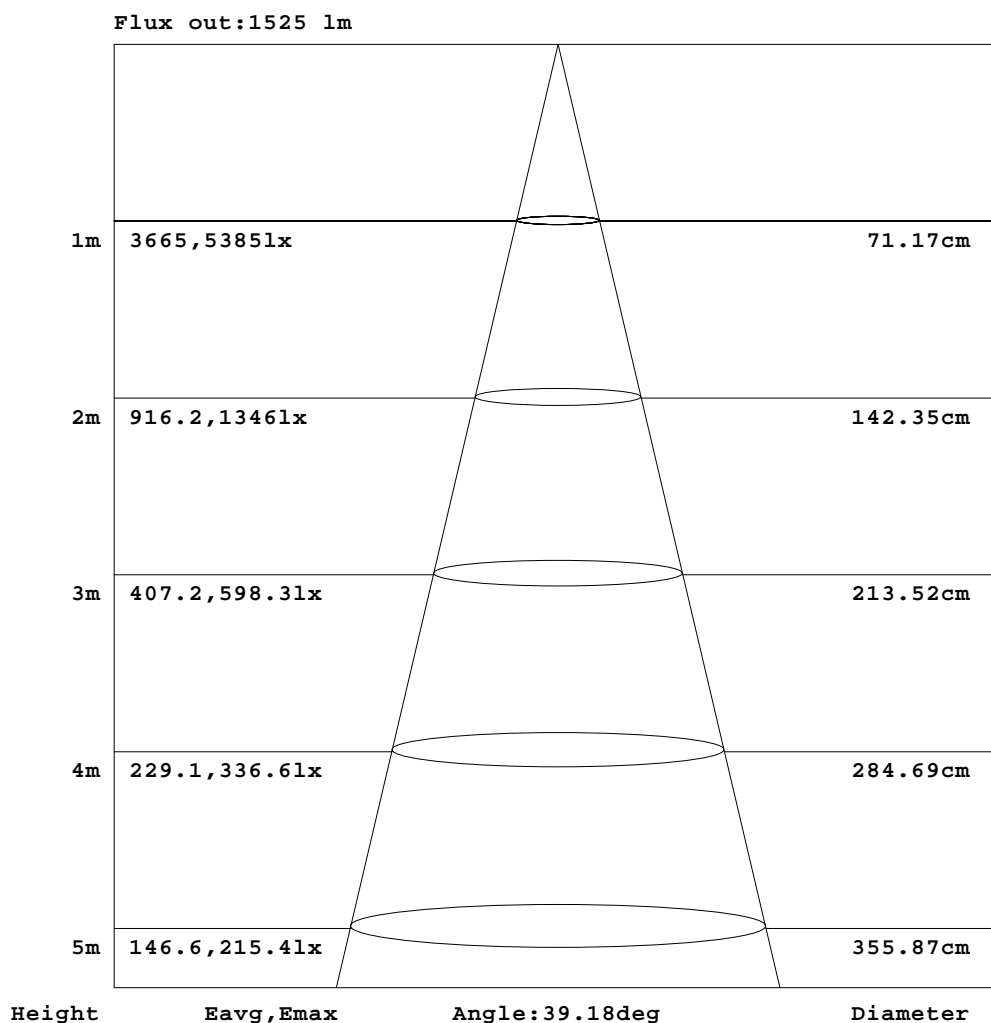


C Range: 0 - 360DEG
C Interval: 30.0DEG
Test Speed: HIGH
Temperature:25.3℃
Operators:zoe
Test Date:2023-10-5

Range: 0 - 180DEG
Interval: 1.0DEG
Test System:EVERFINE GO-SPEX500_V1 SYSTEM V2.00.461
Humidity:65.0%
Test Distance:3.160m [K=1.0000]
Remarks: LAMP:BXRE-30G1000-A-83 Ra:90
LENS:PM-0132B-007-056 36R
DRIVER: ECXe 1050.646 700mA
30minutes warm-up

AAI Figure

Test:U:220.07V I:0.1327A P:28.155W PF:0.9611 Freq:49.99Hz Lamp Flux:2523.8x1 lm		
NAME: 2319.200-UA-700	TYPE:	WEIGHT:
SPEC.: 3000K	DIM.:	SERIAL No.: 2310051124
MFR.: RISE	SUR.: 0.002826m2	Shielding Angle:



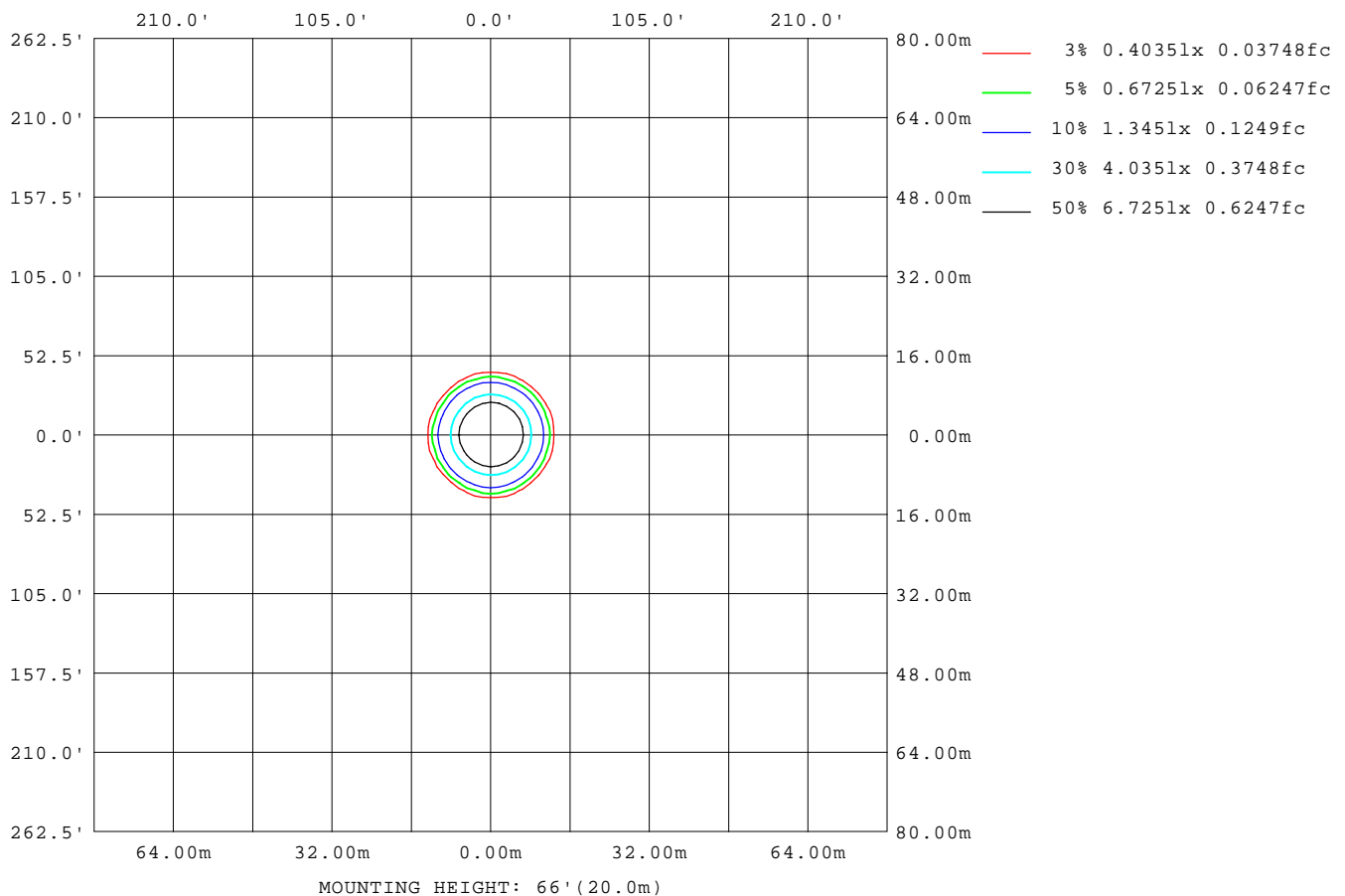
Note:The Curves indicate the illuminated area and the average illumination when the luminaire is at different distance.

C Range: 0 - 360DEG
C Interval: 30.0DEG
Test Speed: HIGH
Temperature:25.3℃
Operators:zoe
Test Date:2023-10-5

Range: 0 - 180DEG
Interval: 1.0DEG
Test System:EVERFINE GO-SPEX500_V1 SYSTEM V2.00.461
Humidity:65.0%
Test Distance:3.160m [K=1.0000]
Remarks: LAMP:BXRE-30G1000-A-83 Ra:90
LENS:PM-0132B-007-056 36R
DRIVER: ECXe 1050.646 700mA
30minutes warm-up

ISOLUX DIAGRAM

Test:U:220.07V I:0.1327A P:28.155W PF:0.9611 Freq:49.99Hz Lamp Flux:2523.8x1 lm		
NAME: 2319.200-UA-700	TYPE:	WEIGHT:
SPEC.: 3000K	DIM.:	SERIAL No.: 2310051124
MFR.: RISE	SUR.: 0.002826m2	Shielding Angle:



C Range: 0 - 360DEG
C Interval: 30.0DEG
Test Speed: HIGH
Temperature:25.3℃
Operators:zoe
Test Date:2023-10-5

Range: 0 - 180DEG
Interval: 1.0DEG
Test System:EVERFINE GO-SPEX500_V1 SYSTEM V2.00.461
Humidity:65.0%
Test Distance:3.160m [K=1.0000]
Remarks: LAMP:BXRE-30G1000-A-83 Ra:90
LENS:PM-0132B-007-056 36R
DRIVER: ECXe 1050.646 700mA
30minutes warm-up

LED Avg.L Report

Test:U:220.07V I:0.1327A P:28.155W PF:0.9611 Freq:49.99Hz Lamp Flux:2523.8x1 lm		
NAME: 2319.200-UA-700	TYPE:	WEIGHT:
SPEC.: 3000K	DIM.:	SERIAL No.: 2310051124
MFR.: RISE	SUR.: 0.002826m2	Shielding Angle:

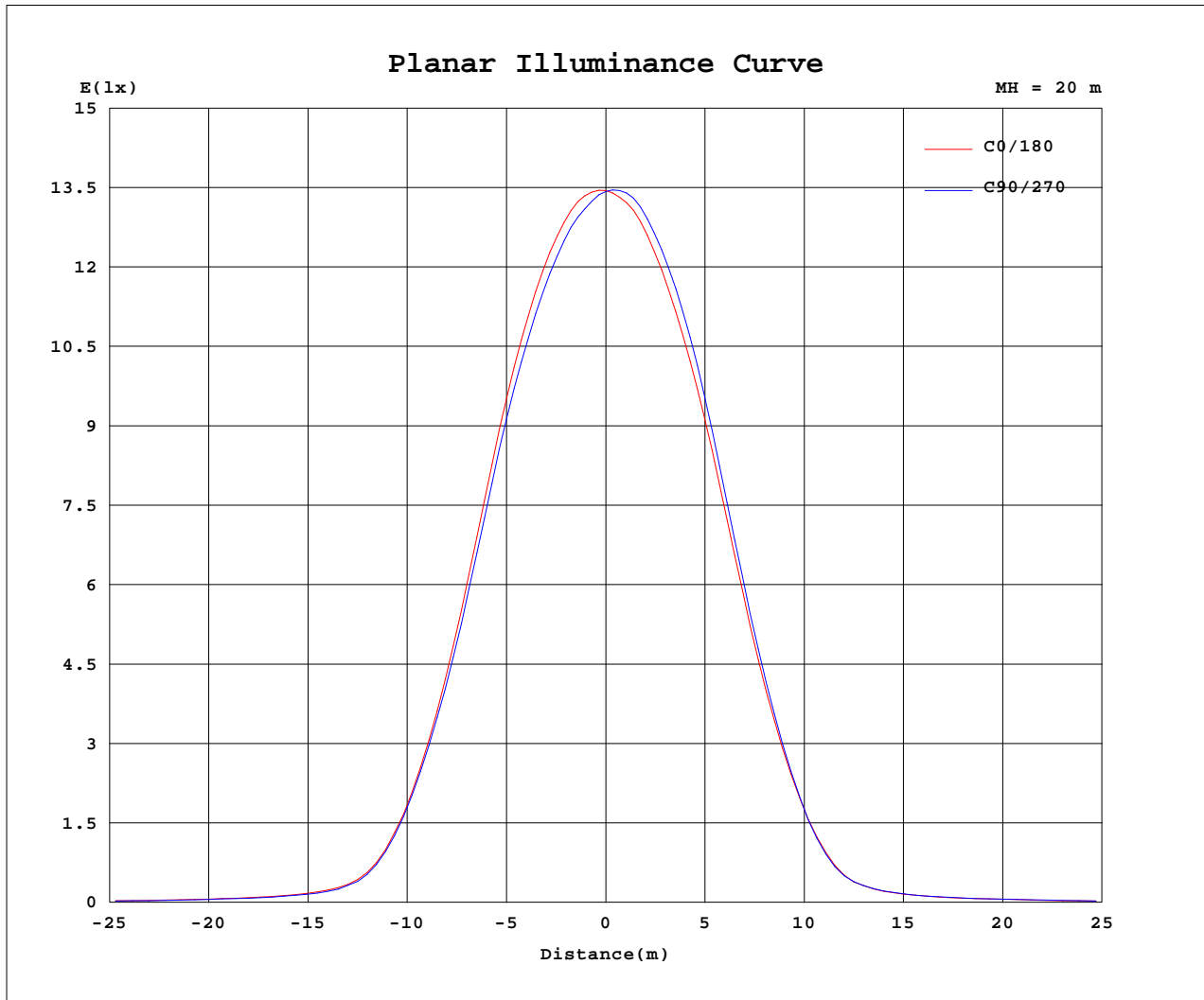
AvgL	cd/m2
L_0~180(65)av	10310
L_0~180(75)av	631
L_0~180(85)av	287
L_90~270(65)av	10291
L_90~270(75)av	588
L_90~270(85)av	259
L_45(65)av	10320
L_45(75)av	635
L_45(85)av	176

Standard: GB/T 29293-2012

C Range: 0 - 360DEG
C Interval: 30.0DEG
Test Speed: HIGH
Temperature:25.3℃
Operators:zoe
Test Date:2023-10-5

Range: 0 - 180DEG
Interval: 1.0DEG
Test System:EVERFINE GO-SPEX500_V1 SYSTEM V2.00.461
Humidity:65.0%
Test Distance:3.160m [K=1.0000]
Remarks: LAMP:BXRE-30G1000-A-83 Ra:90
LENS:PM-0132B-007-056 36R
DRIVER: ECXe 1050.646 700mA
30minutes warm-up

Planar Illuminance Curve



C Range: 0 - 360DEG
 C Interval: 30.0DEG
 Test Speed: HIGH
 Temperature: 25.3 °C
 Operators: zoe
 Test Date: 2023-10-5

Range: 0 - 180DEG
 Interval: 1.0DEG
 Test System: EVERFINE GO-SPEX500_V1 SYSTEM V2.00.461
 Humidity: 65.0%
 Test Distance: 3.160m [K=1.0000]
 Remarks: LAMP: BXRE-30G1000-A-83 Ra: 90
 LENS: PM-0132B-007-056 36R
 DRIVER: ECXe 1050.646 700mA
 30minutes warm-up

LUMINOUS DISTRIBUTION INTENSITY DATA

Test:U:220.07V I:0.1327A P:28.155W PF:0.9611 Freq:49.99Hz Lamp Flux:2523.8x1 lm		
NAME: 2319.200-UA-700	TYPE:	WEIGHT:
SPEC.: 3000K	DIM.:	SERIAL No.: 2310051124
MFR.: RISE	SUR.: 0.002826m2	Shielding Angle:

Table--1

UNIT: cd

C(DEG) (DEG)	0	30	60	90	120	150	180	210	240	270	300	330						
0	5374	5374	5374	5374	5374	5374	5374	5374	5374	5374	5374	5374						
5	5283	5242	5196	5162	5146	5159	5199	5232	5280	5317	5339	5330						
10	4826	4775	4704	4657	4610	4599	4667	4711	4788	4857	4892	4883						
15	3958	3911	3842	3801	3731	3705	3783	3795	3876	3957	4015	4014						
20	2655	2618	2574	2539	2472	2443	2517	2491	2556	2632	2685	2692						
25	1371	1355	1333	1332	1285	1273	1303	1255	1316	1333	1374	1382						
30	466	457	454	445	414	417	431	401	418	418	450	474						
35	173	168	157	156	148	150	158	152	154	162	173	175						
40	104	103	96.9	95.4	93.0	93.4	95.2	94.0	95.4	97.8	105	105						
45	76.3	75.6	72.7	70.6	70.1	70.3	71.8	70.8	71.1	72.1	75.6	76.9						
50	58.3	56.9	54.9	53.7	53.0	53.6	53.7	53.6	54.5	55.6	57.7	59.3						
55	44.2	43.3	41.8	40.4	39.8	39.6	39.9	39.8	40.8	41.8	43.7	45.0						
60	27.0	26.8	25.6	24.5	23.0	22.4	22.5	22.2	22.9	24.1	26.0	27.2						
65	13.3	13.7	13.3	12.8	11.9	11.4	11.3	11.1	11.5	11.7	12.5	13.1						
70	5.54	5.73	5.76	5.20	4.62	4.53	4.36	4.28	4.71	4.71	5.12	5.68						
75	0.62	0.67	0.60	0.49	0.33	0.28	0.31	0.27	0.31	0.37	0.54	0.70						
80	0.10	0.08	0.08	0.09	0.08	0.08	0.08	0.07	0.06	0.08	0.06	0.07						
85	0.08	0.05	0.05	0.07	0.05	0.05	0.07	0.04	0.04	0.06	0.04	0.04						
90	0.00	0.00	0.00	0.00	0.00	0.00	0.00	0.00	0.00	0.00	0.00	0.00						
95	0.00	0.00	0.00	0.00	0.00	0.00	0.00	0.00	0.00	0.00	0.00	0.00						
100	0.00	0.00	0.00	0.00	0.00	0.00	0.00	0.00	0.00	0.00	0.00	0.00						
105	0.00	0.00	0.00	0.00	0.00	0.00	0.00	0.00	0.00	0.00	0.00	0.00						
110	0.00	0.00	0.00	0.00	0.00	0.00	0.00	0.00	0.00	0.00	0.00	0.00						
115	0.00	0.00	0.00	0.00	0.00	0.00	0.00	0.00	0.00	0.00	0.00	0.00						
120	0.00	0.00	0.00	0.00	0.00	0.00	0.00	0.00	0.00	0.00	0.00	0.00						
125	0.00	0.00	0.00	0.00	0.00	0.00	0.00	0.00	0.00	0.00	0.00	0.00						
130	0.00	0.00	0.00	0.00	0.00	0.00	0.00	0.00	0.00	0.00	0.00	0.00						
135	0.00	0.00	0.00	0.00	0.00	0.00	0.00	0.00	0.00	0.00	0.00	0.00						
140	0.00	0.00	0.00	0.00	0.00	0.00	0.00	0.00	0.00	0.00	0.00	0.00						
145	0.00	0.00	0.00	0.00	0.00	0.00	0.00	0.00	0.00	0.00	0.00	0.00						
150	0.00	0.00	0.00	0.00	0.00	0.00	0.00	0.00	0.00	0.00	0.00	0.00						
155	0.00	0.00	0.00	0.00	0.00	0.00	0.00	0.00	0.00	0.00	0.00	0.00						
160	0.00	0.00	0.00	0.00	0.00	0.00	0.00	0.00	0.00	0.00	0.00	0.00						
165	0.00	0.00	0.00	0.00	0.00	0.00	0.00	0.00	0.00	0.00	0.00	0.00						
170	0.00	0.00	0.00	0.00	0.00	0.00	0.00	0.00	0.00	0.00	0.00	0.00						
175	0.00	0.00	0.00	0.00	0.00	0.00	0.00	0.00	0.00	0.00	0.00	0.00						
180	0.00	0.00	0.00	0.00	0.00	0.00	0.00	0.00	0.00	0.00	0.00	0.00						

C Range: 0 - 360DEG
C Interval: 30.0DEG
Test Speed: HIGH
Temperature:25.3℃
Operators:zoe
Test Date:2023-10-5

Range: 0 - 180DEG
Interval: 1.0DEG
Test System:EVERFINE GO-SPEX500_V1 SYSTEM V2.00.461
Humidity:65.0%
Test Distance:3.160m [K=1.0000]
Remarks: LAMP:BXRE-30G1000-A-83 Ra:90
LENS:PM-0132B-007-056 36R
DRIVER: ECXe 1050.646 700mA
30minutes warm-up